

YÜRÜK SEMAİ

NIHAYEND YÜRÜK SEMAİ
(Bahariye)

ALİ RİFAT BEY

(Tekrarda yalnız Sazlar)

YEL LEL Lİ YE LE LA TEN NEN Nİ TE NE NA

TA DE RE DİR TA TE NE NEN

---ARANAĞME---A---

BU TA Bİ LE RUH SA NE İ CÂ

na ne BA KIL MAZ..... GÖZ LERKA MA ŞIR.

MIH... RI DI RAH ŞÂ NE BA KIL..... MAZ.....

(Hanımlar) (DÖNÜŞ YALNIZ SAZLAR)

YEL LEL Lİ YE LE LÂ TEN NEN Nİ TE NE NA TA TE NENEN TENTENENEN

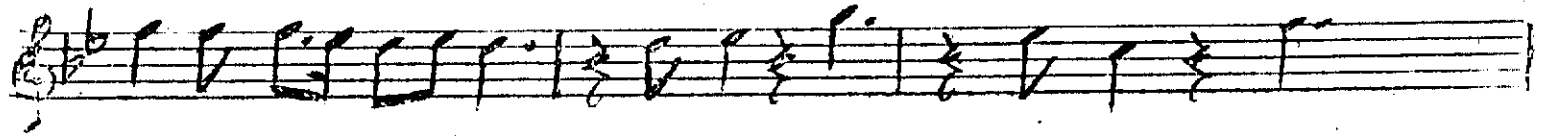
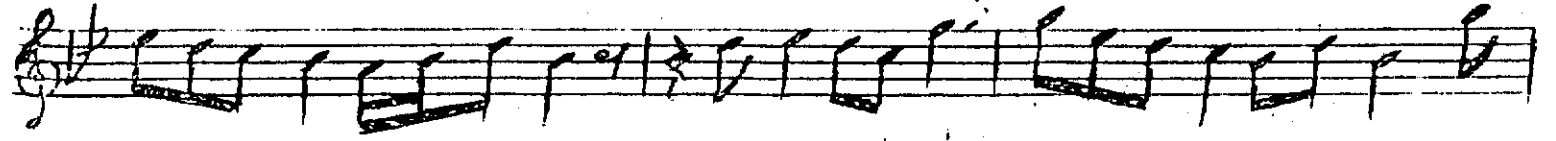
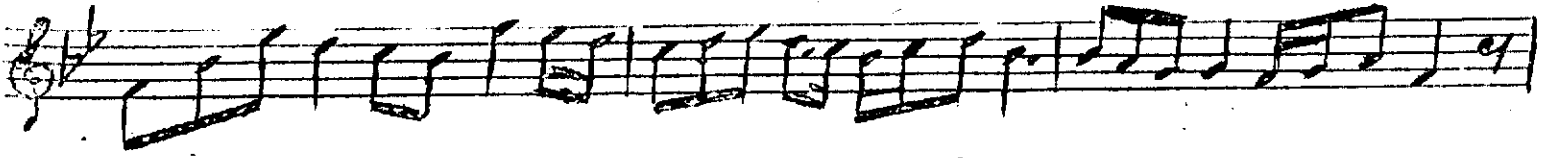
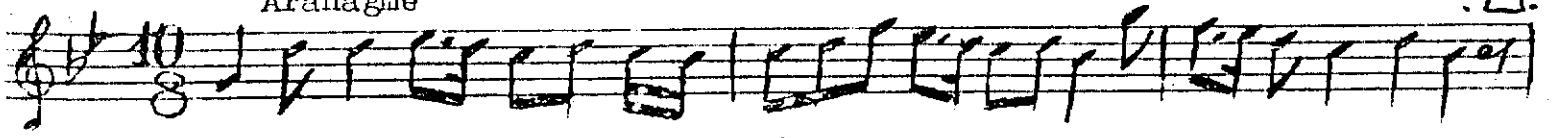
-Aranağme-

TE NEN NE NEN TA.... DİR.... TEN NEN NA..... DİR

YELE LE LE LE LE Lİ YEL..... LE LELLE Lİ VAY

Aranağme

2.



Rit.

Ağır

(Yürük)



TEN

NEN

NA...

DİR

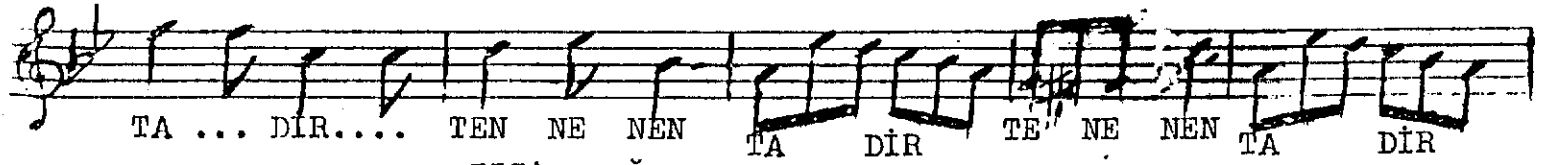
TEN

NEN

TE

NE

NEN



TA ...

DİR....

TEN

NE

NEN

TA

DİR

TE

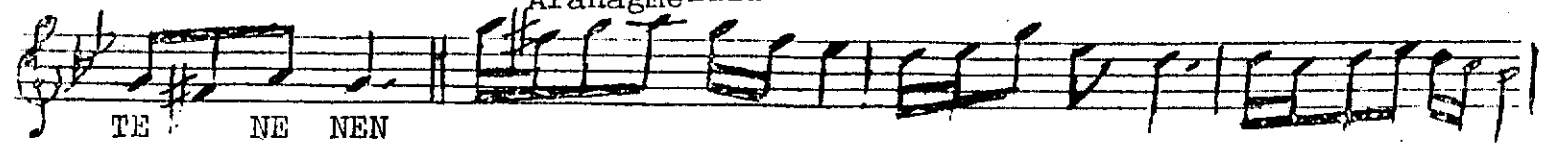
NE

NEN

TA

DİR

---Aranağme---



TE

NE

NEN



(Violonsel)

YEL

LEL

Lİ

YE

LE

LÂ

TENNEN

Nİ

TENE

NA



TA

TE

NE

NEN

TEN

NE

NE

NEN

TEN NE NE NEN

Beğ
Söz
LÜKKA KI →

(Meyan)

-3-

[illegible]

SAH .. NI ÇE MEN DE:

TEKRARI. 1. 42

YEL LEL LI YE LE LÂ TEN NEN NI TE IRE NA

A musical staff in G major (one sharp) and 2/4 time. The melody consists of the following notes: G4 (quarter), A4-B4 (beamed eighth notes), C5 (quarter), B4-A4 (beamed eighth notes), G4 (quarter), F#4 (quarter), E4 (quarter), D4 (half). The lyrics are: TA TE NE NEN NEN NE NE NEN.

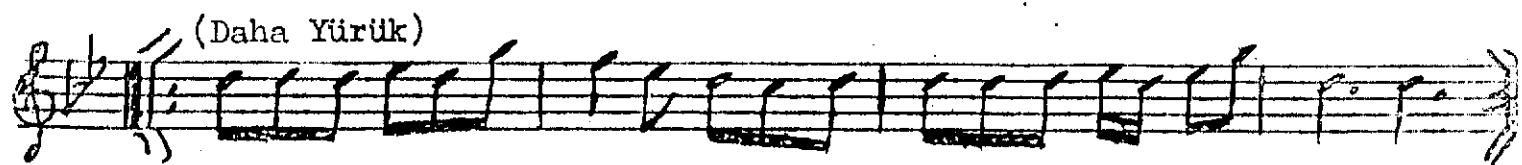
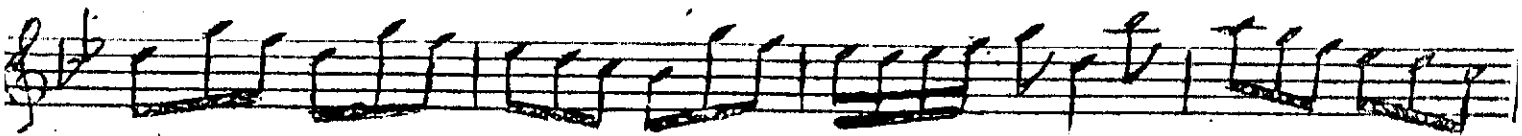
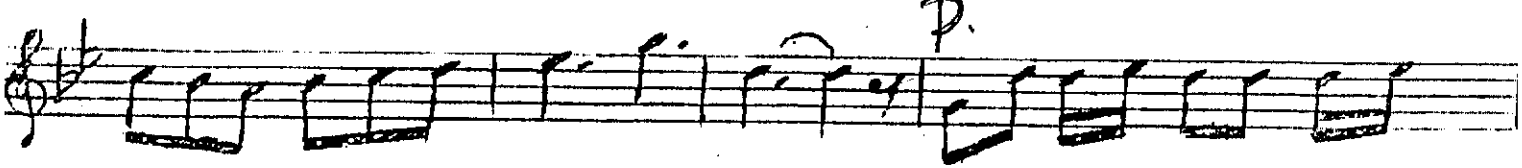
(Yürük) Aranağme

Debra Carlton

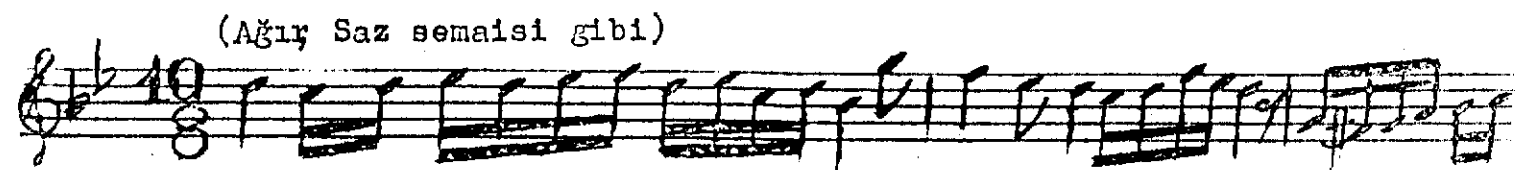
Handwritten musical notation for the first staff of the piece. It begins with a treble clef and a key signature of one sharp (F#). The melody consists of a series of eighth and sixteenth notes, with some beamed together. The staff ends with a double bar line.

A handwritten musical score on a single staff. The staff begins with a treble clef. The notation consists of a series of eighth and sixteenth notes, many of which are beamed together. Several notes have a small 'v' or accent mark above them. The handwriting is somewhat stylized and appears to be a student exercise or a sketch. The notes are written on a five-line staff with a key signature of one sharp (F#).

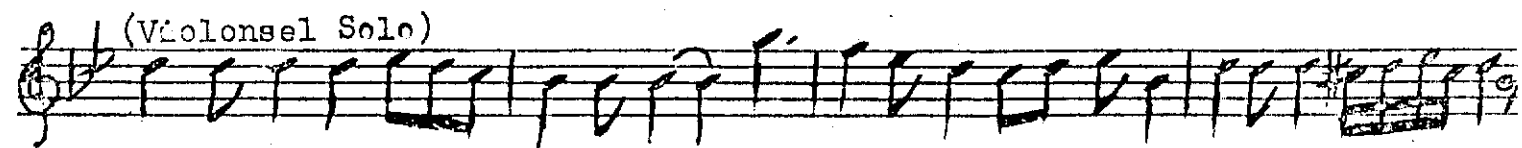
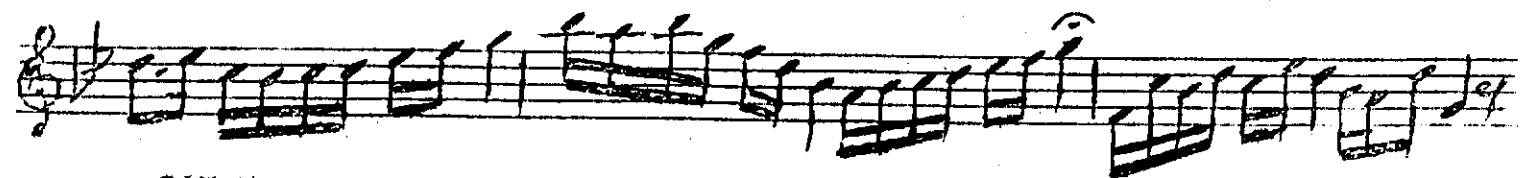
A handwritten musical score on a single five-line staff. The notation begins with a treble clef and a key signature of one sharp (F#). The melody starts on a dotted half note G4, followed by a quarter note A4, a quarter note B4, and a quarter note C5. This is followed by a series of eighth notes: D5, E5, F#5, G5, A5, B5, C6, and D6. The piece concludes with a final whole note G4. There are some additional markings above the first few notes, possibly indicating fingerings or breath marks.



(Daha Yürük)



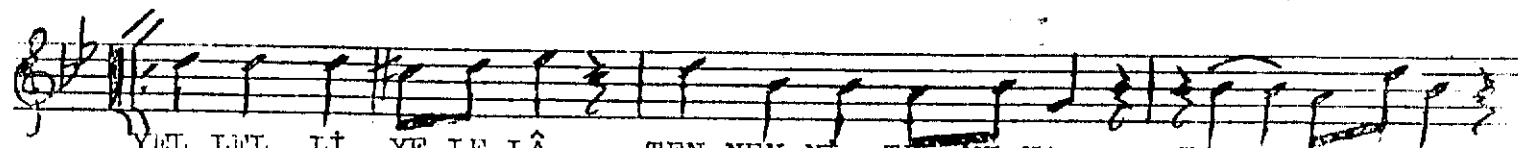
(Ağır Saz semaisi gibi)



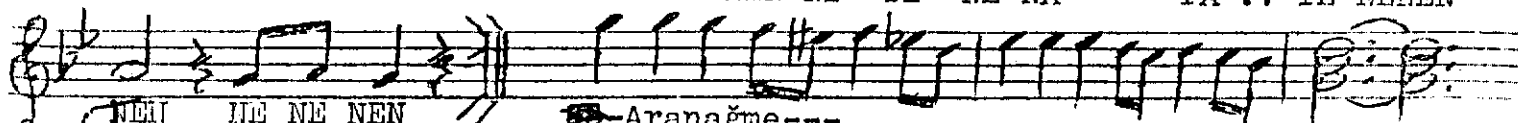
(Violonsel Solo)



(Beraber)



YEL LEL Lİ YE LE LÂ TEN NEN Nİ TE NE NA TA .. TE NENEN



NEN NEN NEN

Aranağme---

